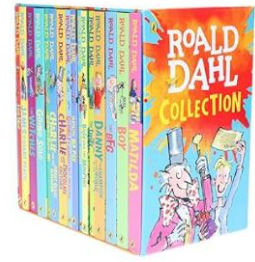


Week beginning: 16.03.2026



Dear Parents/Carers,

English - This week we will be thinking about all the Roald Dahl books we have read and working on book reviews.

Maths - In maths the children will be measuring temperature and recapping finding different ways to make amounts with money and giving change

Music - This week we are exploring Reggae music.

R.E - We are going to recognise the Easter 'rescue'.

Computing - We are learning to use a database to answer search questions.

PSHE - We are going to sort foods into the correct food groups and know which foods my body needs every day to keep me healthy.

History - We will be identifying Rosa Parks' qualities.

Science - We will be exploring and understanding food chains.

DT - In DT this week we are working with fabric to create a hand puppet.

PE - In PE we will be developing creative counterbalances that require you to lean away from each other.

HOMEWORK EXPECTATIONS EACH WEEK

Reading - Please read with your child every night for 10 minutes and ask them questions about the book. Books will continue to be changed by the children on a Friday.

Comprehension - Complete one comprehension task per week. (Given out on a Friday to be handed in on a Wednesday.)

Spellings - See green homework book for written task. (Given out on a Friday to be handed in on a Wednesday.)

Numbots - Spend 10 minutes a day on numbots, 3 or 4 times a week.

Key Dates:

Wednesday 18th March - Rocksteady Concert - Invitations sent directly to parents by Rocksteady- 10am

Thursday 19th March - Year 2 visit to Nower Wood

Monday 23rd March - Rocksteady Concert - Invitations sent directly to parents by Rocksteady-10am

Tuesday 24th March - Theatre Works Performance - Invitations sent directly to parents by Theatreworks- 10am

Wednesday 24th March - Rocksteady Concert - Invitations sent directly to parents by Rocksteady- 10am

Friday 27th March - End of Spring Term - **EARLY FINISH** - 1.15pm

Looking for Parent helpers for sewing puppets - week beginning 16th March - please contact your teachers if you are able to help.

Donations - if you can donate any of the following to help us create our Easter gardens please let us know

- 2 bags of play sand
- Pebbles

- Please donate any embellishments for Hand puppets



If you have any questions or concerns, regarding your child, please see your child's class teacher.

Thank you for you continued support,

The Year 2 Team ☺